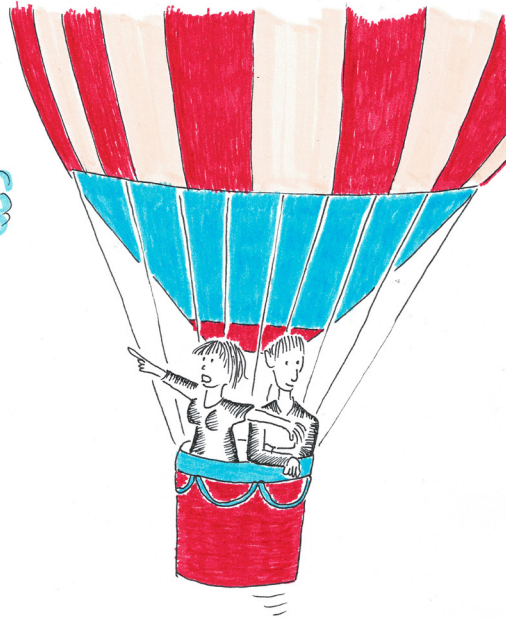
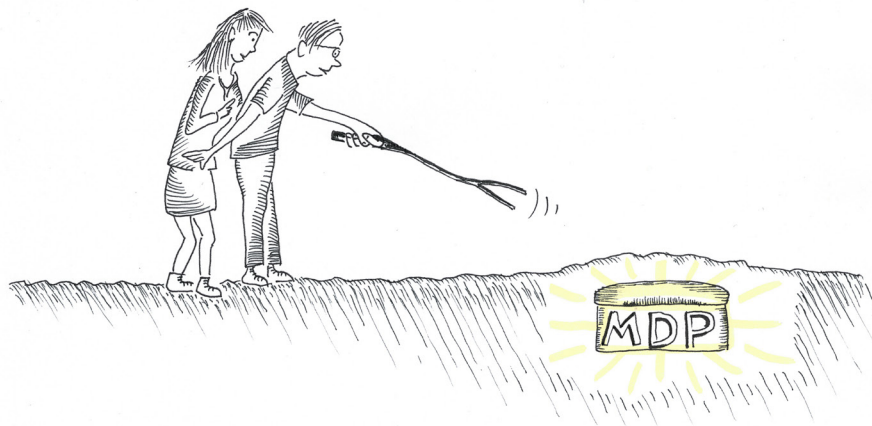




Médecine
de la Personne
International Group



How do we experience medicine of the person today?



75th international meeting

August 20th to 23rd 2025

MONTMIRAIL
Switzerland

www.medecinedelapersonne.org

Who we are

We are doctors and other healthcare professionals and their spouses who see the relationship with the patient as an essential element of treatment.

As a convinced Christian, Geneva physician **Paul Tournier**, who lost both parents as a young child, discovered the importance of the personal relationship in caring for a sick person. After 15 years of practice as a general practitioner, he defined “medicine of the person” in 1940, in his first book entitled “Médecine de la Personne”, and went on to describe his experience in 25 other books, translated into many languages. Openness to a personal relationship is the fundamental attitude that enables the doctor to better understand illness in its significance for the person, and eventually to complement the scientific and technical analysis of illness with consideration of deep-rooted life problems, and thus promote healing.

The association’s congresses, which have been held almost every year since 1947, are devoted to a theme related to medicine of the person. As the Bible contains essential foundations for our human relationships, each day begins with an opportunity for meditation before breakfast. This is followed by a study of biblical texts and the medical lectures, and then a discussion in small groups on the lectures and how they relate to daily practice. Attendance at this conference is not linked to religious affiliation.

Lectures are given in French, German or English. Participants can read the printed translations in the two other languages. Discussions in confidential small groups (monolingual or bilingual) are considered an essential element of the conference.



- Watch Charlot
1 and 2 -



The evenings provide an opportunity for discussion and exchange of personal experience. The congress concludes with an ecumenical service.

Three days of discovery and relaxation before the conference provide an opportunity to explore the region and network with colleagues and friends from different disciplines and countries. Registration for these days is optional.

To register,

Please use the registration form on the website and send it to the regional secretariat by May 15, 2025 (see page 8). Online registration is possible: www.medecinedelapersonne.org.

As small-group discussions and personal contacts play an essential role, the congress - “study days” - must be attended in their entirety.

Further information can be found on page 7.

How do we experience medicine of the person today?

The past 80 years since the first annual conference for medicine of the person in 1947 have brought incredible advances in medical technology. Both imaging and laboratory analysis, along with a good history taking and clinical examination, usually lead us to reliable diagnoses and helpful therapies. However, do these allow us to understand the whole person? Although the psychosomatic aspects are part of a correct assessment today, they are still far too often neglected in favour of technology due to the doctor's lack of time, over-reliance on technology, and the patient's pre-conceived ideas and demands.

How often do we suspect current life problems or old traumas during in-depth conversations that could be responsible for psychological tensions or even cause organic disorders and prevent illnesses from getting better?

On the other hand, we live in a time of an overwhelming amount of worldly wisdom and psychological practices or therapy methods to help us regain our mental and physical balance and to find orientation amidst the exacting demands on our life. Even children and young people increasingly suffer from the burden of having to find purpose or even just hope for their lives.

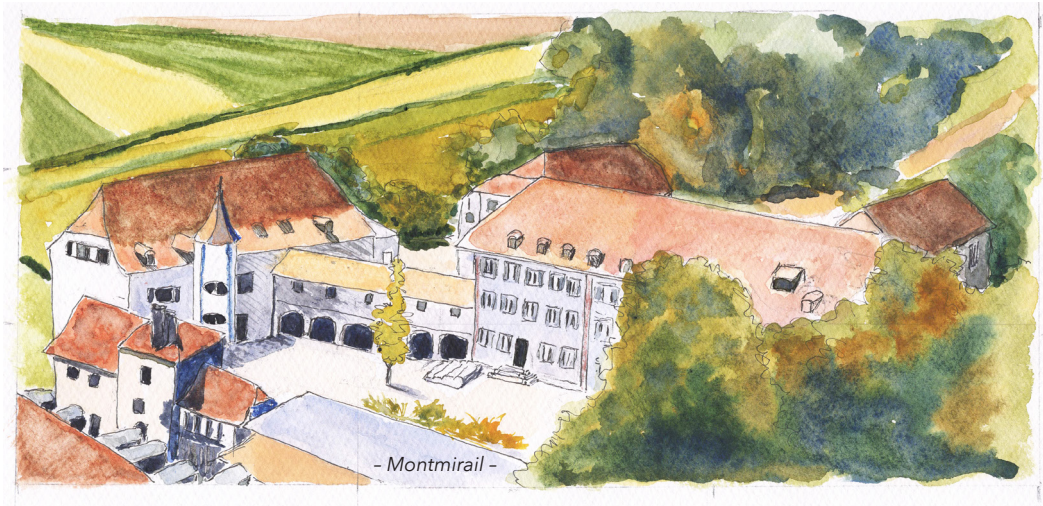
What can we offer in the way of medicine of the person, medicine with a personal doctor-patient relationship, in our largely secular world? How do we find points of contact with people from other cultures?

We want to discuss these questions and learn from the experiences of various experts at the 75th International Annual Conference and contribute our own experiences and views. In this way we will also be able to make progress ourselves.

Frédéric von Orelli



Programme 2025



Daily at 07.40: opportunity for meditation

Wednesday 20th August

From 17.00 onwards: arrival of participants

18.30 Dinner

20.30 Welcome, information, introduction to the Theme

Thursday 21st August

8.00 Breakfast

9.00 **How do we experience the Medicine of the Person of Paul Tournier today?**

What should we do, what can we do? Rom. 12,2-3

Gerda Dietze, Diabetologist, Germany

9.30 **Emergency medicine by telephone – an unusual medical relationship**

Pierre Carnoy, Geriatrician, France

10.30 Coffee-Break

11.00 Groupwork

12.30 Lunch

15.30 **How does the lack of religious commitment among young people today affect psychotherapeutic treatment?**

Susanne Schlueter-Müller Susanne, Child and adolescent psychiatrist, Germany

16.30 Coffee/Tea-Break

17.00 Groupwork

18.30 Dinner

20.00 **Paul Tournier, my grandfather**

Alain Tournier



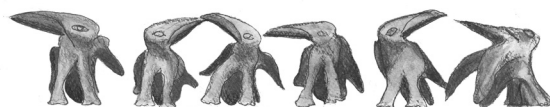
- Crows, Martha und Walter Hofer-Hofer -

Friday 22nd August

- 8.00 Breakfast
- 9.00 **An example of person-centred, non-discriminatory acceptance and care, 2 Kings 5: 1-5 & 8-19**
Richard Henderson-Smith, retired General Practitioner UK
- 9.30 **Medicine of the person versus different ideas of personalized medicine; is Tournier's Christian way of viewing people still relevant nowadays?**
Friederike Matter-Tansky, Cardiologist, Switzerland
- 10.30 Coffee-Break
- 11.00 Groupwork
- 12.30 Lunch
- 14.30 **Members' Meeting**
- 15.30 **Reflections on decisions about resuscitation**
Susanne Renaud, Neurologist, Switzerland
- 16.30 Coffee/Tea-Break
- 17.00 Groupwork
- 18.30 Dinner
- 20.00 Social evening

Saturday 23rd August

- 8.00 Breakfast
- 9.00 **Jesus, a psychotherapist, John 4, 16-26**
Caroline Wackernagel, General Practitioner, Switzerland
- 9.30 **Understanding Symptoms can open the Way to a more Meaningful Life**
Ilonka Boomsma, Psychiatrist, Netherlands
- 10.30 Coffee-Break
- 11.00 Groupwork
- 12.30 Lunch
- 14.00 **Ecumenical Service**
- 15.00 End of the Conference



Médecine de la Personne, International Group Annual General Meeting

All participants having paid the annual fee are invited to attend the annual general meeting at 14.30, Friday August 22nd 2025 in Montmirail. Members unable to attend may delegate a proxy using the form attached to the registration form.

Agenda: General Report | Financial Report | Re-election of the Equipe | A.O.B.

Kathy Webb-Peploe, President

Relaxation and discovery days

Sunday 17th to Wednesday 20th August 2025

Sunday 17th August

- > 16.00 onwards: Arrival of participants
- > 18.30: Dinner
- > 20.00: Information on the discovery days

Monday 18th August

Neuchâtel

- > 9.15: Departure for Neuchâtel, guided tour by Delphine Collaud.
- > 12.00: Lunch on the lake.
- > 13.30 – 15.30: Free time to explore the city on foot.



- > 15.30: Meeting point at the collegiate church for guided tour and concert.
- > 17.30: Return by bus to Montmirail, barbecue.

Tuesday 19th August

La Chaux-de-Fonds, Le Locle, Les Brenets

- > 9.15: Departure for La Chaux-de-Fonds: guided tour of the Musée International de l'Horlogerie, followed by a free visit.
- > 12.00: Bus to Château des Monts and Le Locle Watchmaking Museum. Lunch on the lawn of the Château des Monts and free visit of the museum rooms.
- > 15.15: Departure for Les Brenets.
- > 16.00: board the boat on the Doubs river. 45 minute walk to Le Saut du Doubs along a pleasant path.



des Monts
Museum.
Château
seum
rooms.

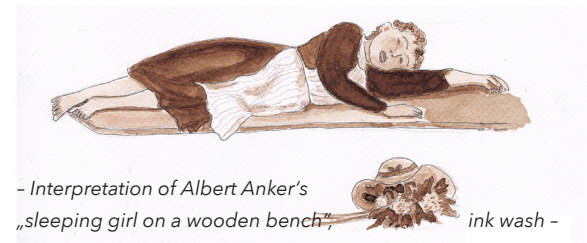
- > 17.15: meal at "Le Saut du Doubs".
- > 18.30: Return to Montmirail.
Free evening in Montmirail.



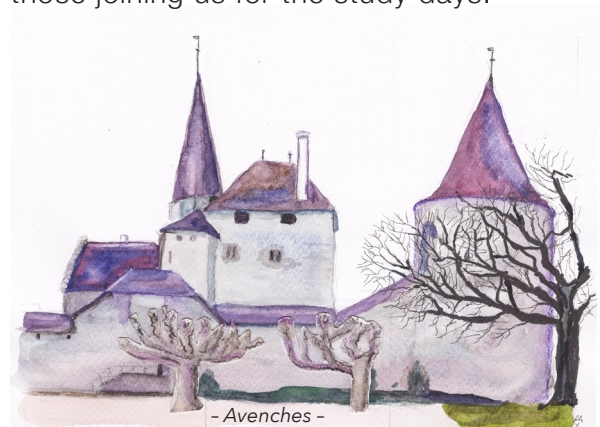
Wednesday 20th August

Albert Anker, Mont Vully, Avenches

- > 9.00: Lecture and film on the great Swiss painter Albert Anker (1831 to 1910) by his great-grandson, Pastor Matthias Brefin.



- > 11.30: Bus journey to Mont Vully with lunch in the fantastic sculpture garden 'Le Pavillon' created by ceramic artists Martha and Walter Hofer-Hofer. Free time to explore the garden after lunch.
- > 14.00: Avenches (Roman town of Aventicum) with a walk to the Amphitheatre and the "Cigognier". Visit to the remarkable 'Roman Museum' (golden bust of Marcus Aurelius).
- > 16.00: Return to Montmirail to welcome those joining us for the study days.



Booking information

Conference address

Don Camillo

Montmirail 6
2075 Thielle-Wavre
Tel +41 32 756 90 00
info@doncamillo.ch
www.doncamillo.ch



Travel instructions

By car

At **Berne** take the A1 towards Morat, Neuchâtel. Just after the Thielle bridge, branch right and follow signs to Cornaux. At the next crossroads turn right towards Montmirail.

From **Geneva** or **Lausanne**, take the A1 towards Yverdon-les-Bains. A5 towards Neuchâtel. Take the Thielle exit. On the main road, turn right before the bridge towards Montmirail. After about 400 m, branch left at the sign to Montmirail.

By train

from Neuchâtel or Berne, get off at 'Marin-Epagner'. From the station, it is a 20-minute walk to Montmirail. The path is signposted. Call for pick up +41 79 30 30 230

By plane

Geneva or Zurich Airport then by train.

Costs

(given per person, including conference fees, annual membership fee, visits, all meals and lodging)

Discovery days (17. - 20. 8. 2025):

£ 630 / € 750 (children 5-16: 50 %, 0-4: free)

Study days (20. - 23. 8. 2025):

£ 490 / € 585 (children 5-16: £ 245 / € 290, 0-4: free)

Students/participants from Eastern Europe:

£ 130 / € 155 (study days)

Other reductions available on enquiry from Equipe members.

Donations enable us to offer reductions and are welcome.

We ask that those coming attend all the study days, as the discussions in the small groups and the way opinions and experiences are shared in

those groups as the members get to know each other better are an important part of what we learn at these meetings of Médecine de la Personne.

How to book and pay

It is possible to reserve **extra nights** both before and after the meeting, by contacting Montmirail after booking your place at the meeting

Registration can be done online on the website www.medecinedelapersonne.org or by printing the subscription form and sending it to your regional secretary (page 8) before **15th May**. The **total cost** needs to be paid before the **31st May** (bank account details page 8)

Children of participants are welcome. They remain the responsibility of their parents. During the study days childcare will be available for children over 6.

For further information prior to the meeting please contact

Frédéric von Orelli

Rainweg 8
CH – 4144 Arlesheim
Tel +41 616 818 189
frederic.vonorelli@bluewin.ch

Kathy Webb-Peploe

Gravelye House, Gravelye Lane
GB – Lindfield, West Sussex, RH16 2SN
Tel +44 1444 484 838
Tel +44 7711 078 987
kathywp.247@gmail.com

or your regional secretary

Équipe / Team - Secrétariat / Secretariat / Sekretariate

Anja Uta WILMS
Bergdriesch 22
D – 52062 AACHEN
+49 176 625 574 6
anjauta_w@web.de

Petr FIALA
Secrétariat (CZ)
Zvěřinova 12
CZ – 13000 PRAHA
+420 602 133 078
petrfiala@hotmail.com

Ralf HINRICHS
Secretariat (D)
An der grauen Burg 44,
D – 53332 BORNHEIM
+49 222 790 991 81
ralf_hinrichs@hotmail.com

Philippe LERNOULD
Secrétariat (F)
61 rue Dupont des Loges
F – 57000 METZ
+33 387 751 889
phlernould57@orange.fr

Étienne et Claude ROBIN
40 bd Carnot
F – 21000 DIJON
+33 380 668 490
clauderobindelpa@wanadoo.fr
etienne-m.robin@wanadoo.fr

François SCHERDING
31 rue Champ Rochas
F – 38240 MEYLAN
+33 476 901 156
francois.scherding@laposte.net

Michael TERRY
Orchard Cottage, Brook Lane
Chillerton
UK – Isle of Wight
PO30 3EN
+44 1983 721 423
+44 7801 948 438
mterry@btinternet.com

Frédéric VON ORELLI
Secretariat (CH)
Rainweg 8
CH – 4144 ARLESHEIM
+41 616 818 189
frederic.vonorelli@bluewin.ch

Katharine WEBB-PEPLOE
Secretariat (GB)
Gravelye House, Gravelye Lane
GB – Lindfield, West Sussex,
RH16 2SN
+44 1444 484 838
+44 7711 078 987
kathywp.247@gmail.com

Rutger MEIJER
Secretariaat (NL)
Cloosterweg 8
NL – 2103 SG HEEMSTEDE
+31 237 501 904
ihjkbrink@hotmail.com

Ingenet ANOFF-KWAFO
Cloosterweg 8
NL – 2103 SG HEEMSTEDE
+31 624 541 878
ikwafo-kwafo@gmail.com



Banques / Bank / Bankverbindungen

Dr. Ralf Hinrichs
Medizin der Person
Deutsche Apotheker-
und Ärztebank
BIC DAAEEDDDXXX
IBAN:
DE32 3006 0601 0407 2643 64

Médecine de la Personne,
Suisse, BLKB, 4410 Liestal
CH98 0076 9439 5153 5200 1



Crédit Mutuel d'Autun
14, av. Charles de Gaulle
71400 Autun
Compte : Médecine de la
personne
IBAN:
FR76 1027 8025 0200 0732 6934 553

Médecine de la
Personne
British Branch
Natwest Haywards
Heath
Account n° 10982647
sort code 60-10-26